

HPTLC FINGER PRINTING ANALYSIS OF THE TANNINS FROM *AILANTHUS EXCELSA* (ROXB.) LEAVES

Sudhir Singh Gangwar¹, Amita Tilak¹, Ranjana Sharma¹ and Ravindra C. Sutar^{2*}

¹Department of Pharmacy, GSVM Medical College, Kanpur, Uttar Pradesh, India.

²Department of Pharmacology, Sanjivani College of Pharmaceutical Education and Research, Kopargaon. At-Sahajanandnagar, Post-Shinganapur (Pin Code- 423603), Tal- Kopargaon, Dist- Ahmednagar, Maharashtra, India.

Article Received on
27 Nov. 2018,

Revised on 17 Dec. 2018,
Accepted on 07 Jan. 2019

DOI: 10.20959/wjpr20192-14076

*Corresponding Author

Ravindra C. Sutar

Department of
Pharmacology, Sanjivani
College of Pharmaceutical
Education and Research,
Kopargaon. At-
Shinganapur (Pin Code-
423603), Tal- Kopargaon,
Dist- Ahmednagar,
Maharashtra, India.

ABSTRACT

Objective: The present study was conducted to identify the tannins from petroleum ether (PEAE) extract of medicinally and economically useful leaves of *Ailanthus excelsa* (Roxb.) using High Performance Thin Layer Chromatography (HPTLC) technique. **Methods:** Preliminary phytochemical screening was done and HPTLC studies were carried out. CAMAG HPTLC system equipped with Linomat V applicator (Switzerland). Densitometric scanning was performed with Camag TLC scanner IV in the reflectance absorbance mode at 540 nm and operated by Win CATS software (1.4.6 Camag) with the help of tungstant lamp. **Results:** HPTLC finger printing of tannins of petroleum ether extract of leaves revealed eight polyvalent phytoconstituents (8 peaks) and corresponding ascending order of Rf values in the range of 0.005 to 0.935. **Conclusions:** With the results of HPTLC analysis and above Rf values we have concluded the presence of tannins in the extract.

KEYWORDS: *Ailanthus excelsa* (Roxb.) leaves, tannins, HPTLC Fingerprinting.

INTRODUCTION

Natural remedies from medicinal plants are found to be safe and effective. Many plant species have been used in folklore medicine to treat various ailments. Even today compounds from plants continue to play a major role in primary health care as therapeutic remedies in many developing countries.^[1] Standardisation of plant materials is the need of the day.

Several pharmacopoeia containing monographs of the plant materials describe only the physicochemical parameters. Hence the modern methods describing the identification and quantification of active constituents in the plant material may be useful for proper standardisation of herbals and its formulations. Also the WHO has emphasized the need to ensure the quality of medicinal plant products using modern controlled technique and applying suitable standards.^[2] High performance thin layer chromatography (HPTLC) is a valuable tool for reliable identification. It can provide chromatographic fingerprints that can be visualized and stored as electronic images.^[3] *Ailanthus excelsa* (Roxb.) a plant used in the Indian school/system of medicine for variety of purposes.^[4] *Ailanthus excelsa* (Roxb.) belonging to family Simaroubaceae.^[5] In Chinese system of medicine bark of *A. excelsa* is used to treat diarrhea and dysentery, especially when there is a blood in stool.^[6,7] *Ailanthus excelsa* is a fast growing tree and is extensively cultivated in many parts of India in the vicinity of villages; it is cultivated as an avenue tree for its deep shade and can be used for ant-erosion purposes.^[8] The bark has been used in Asian and Australian medicine to counteract worms, excessive vaginal discharge, malaria and asthma.^[9,10] In this present study the HPTLC fingerprinting of petroleum ether extract of leaves of *Ailanthus excelsa* has been performed which may be used as markers for quality evaluation and standardization of the drug.

MATERIALS AND METHODS

Plant material

Leaves of *Ailanthus excelsa* (Roxb.) were collected in the Month of August from the agricultural fields of Tirunelveli district, Tamilnadu. The plant was identified and leaves of *Ailanthus excelsa* were authenticated and confirmed from Dr.V.Chelladurai, Research Officer, Botany, C.C.R.A.S. (Retired), Govt. of India by comparing morphological features (leaf and stem arrangement, flower /inflorescence arrangement, fruit and seed morphology etc.). The collected plant material was shade dried to retain its vital phytoconstituents and then subjected to size reduction for further extraction process.

Preparation and Extraction of Plant material

Preparation of Petroleum ether extract by Cold maceration (at room temperature)

Method

Cold Maceration Extraction Method: In this process, the coarsely powdered plant material of *Ailanthus excelsa* leaves is extracted by placing the powder in a stoppered container with

the solvent petroleum ether and allowed to stand at room temperature for a different period of time (6h, 12h, 24h, 48h) with frequent agitation until the soluble matter has dissolved. The mixture then is strained, the marc (the damp solid material) is pressed, and the combined liquid is clarified by filtration or decantation after standing. All the extract was evaporated to dryness, weighed and stored for future use.

The Petroleum ether extract of *Ailanthus excelsa* (PEAE) leaves was subjected to the following investigation,

1. HPTLC Fingerprinting of Tannins

HPTLC Fingerprinting

HPTLC studies were carried out following the method of Harborne^[11] and Wagner *et al.*^[12]

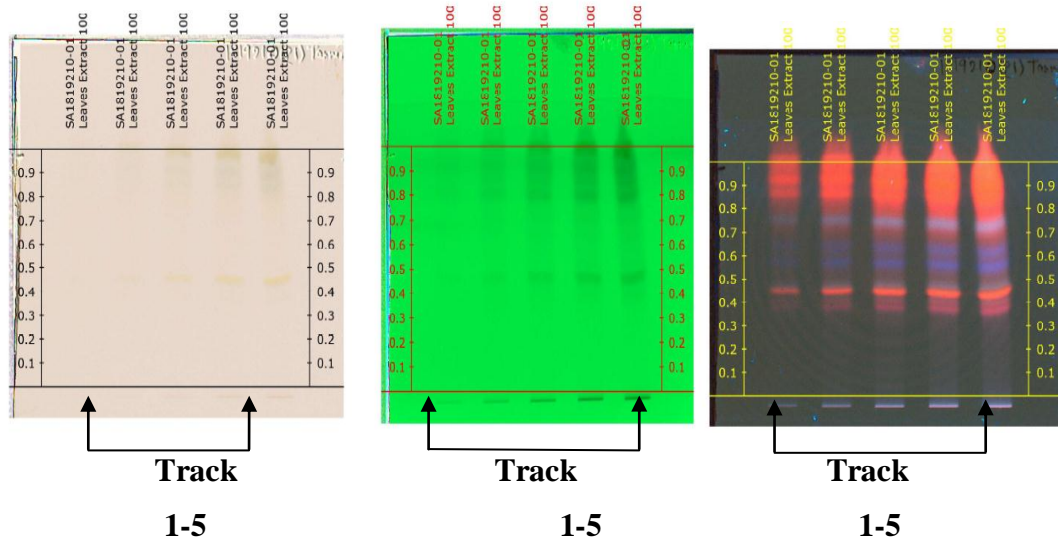
HPTLC instrumentation and Chromatographic conditions

The sample solutions were spotted in the form of bands of width 8.0 mm with a Camag microlitre syringe on precoated silica gel aluminium plate 60F254 (20 cm × 10 cm with 250 µm thickness; E. Merck, Darmstadt, Germany, supplied by Anchrom Technologists, Mumbai) using a Camag Linomat V (Switzerland). The plates were activated at 120°C for 20 min prior to chromatography. A constant application rate of 1.0 µl/s was employed and space between two bands was 5 mm. The slit dimension was kept at 6.0mm × 0.45 mm and 10 mm/s scanning speed was employed. The slit bandwidth was set at 20 nm, each track was scanned thrice and baseline correction was used. The mobile phase for tannins consisted of toluene-ethyl acetate-formic acid in the volume ratio of 6:4:0.3 (v/v) and FeCl₃ was used for derivatization. 20 ml of mobile phase was used per chromatography. Linear ascending development was carried out in 20 cm x 10 cm twin trough glass chamber (Camag, Muttenz, Switzerland) saturated with filter paper whatman no: 1 in the mobile phase. The optimized chamber saturation time for mobile phase was 20 min at room temperature (25°C ± 2) at relative humidity of 60% ± 5. The length of chromatogram run was 8.0 cm. Subsequent to the scanning, TLC plates were dried in a current of air with the help of an air dryer. Densitometric scanning was performed with Camag TLC scanner IV in the reflectance absorbance mode at 540 nm and operated by Win CATS software (1.4.6 Camag) with the help of tungsten lamp. Subsequent to the development; TLC plate was dipped in dragendorff reagent followed by drying in oven at 110°C. Concentrations of the compound chromatographed were determined from the intensity of diffusely reflected light. Evaluation was carried out by comparing peak areas with linear regression.^[13-21]

RESULTS AND DISCUSSION

The chromatograms shown in fig.1 indicate that all sample constituents were clearly separated without any tailing and diffuseness.

Tannin Confirmation



Chromatogram at visible Chromatogram at 254 nm Chromatogram at 366 nm

Track 1-5: Petroleum ether extract of *Ailanthus excelsa* leaves

Fig. 1: HPTLC fingerprint profile of tannins of leaf extract of *Ailanthus excelsa* Detection of tannins in PEAE.

It was observed that track 1-5 shows petroleum ether extract. The chromatogram in Fig. 3 shows separation of constituents.

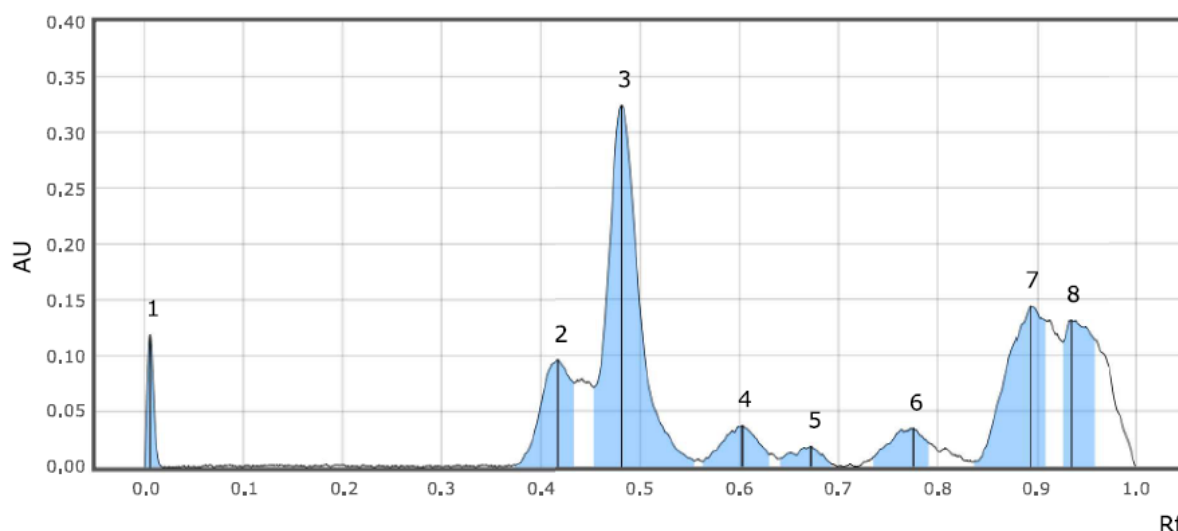


Fig. 2: Tannins confirmation at visible derivatisation with $FeCl_3$.

It was observed that there is a separation of different phytoconstituents, in PEAE.

Table 1: R_f Values for tannins in petroleum ether extract of *Ailanthus excelsa* leaf.

Peak #	Start		Max			End		Area		Manual peak	Substance Name
	R _f	H	R _f	H	%	R _f	H	A	%		
1	0.000	0.0000	0.005	0.1187	13.11	0.018	0.0000	0.00086	2.87	No	
2	0.370	0.0010	0.417	0.0960	10.61	0.433	0.0751	0.00331	11.00	No	
3	0.453	0.0715	0.481	0.3245	35.84	0.554	0.0052	0.01196	39.70	No	
4	0.563	0.0047	0.603	0.0373	4.12	0.630	0.0108	0.00156	5.17	No	
5	0.639	0.0073	0.673	0.0184	2.03	0.694	0.0018	0.00065	2.15	No	
6	0.735	0.0088	0.776	0.0347	3.83	0.793	0.0208	0.00145	4.81	No	
7	0.836	0.0044	0.894	0.1446	15.97	0.910	0.1303	0.00623	20.69	No	
8	0.926	0.1121	0.935	0.1313	14.50	0.959	0.1138	0.00410	13.62	No	

**Fig. 3: Chromatogram for tannins in petroleum ether extract of *Ailanthus excelsa* leaves Fingerprinting study of tannins of PEAE at 366 nm.**

Fingerprinting study of PEAE at 366 nm shows eight R_f between the range of 0.005- 0.935. R_f0.481 has 35.84% concentration in Table 1, Figure 3.

CONCLUSION

It is observed in the above HPTLC studies that, PEAE contain a lot of polyvalent chemical constituents with (Roxb.) different R_f values. The developed fingerprint analysis of leaf extract of *Ailanthus excelsa* will help to isolate and identify new tannins which will offer a possibility to discover lead a molecule for drug development.

ACKNOWLEDGMENT

The authors wish to thank Anchrom Test Lab Pvt. Ltd. Mulund (E), Mumbai - 400081 for their excellent and generous help for the HPTLC analysis.

REFERENCES

1. Bobbarala V, Bramhachari PV, Ravichand J, Reddy YHK, Kotresha D, Chaitanya KV. Evaluation of hydroxyl radical scavenging activity and HPTLC fingerprint profiling of *Aegle marmelos* (L.) Correa extracts. J Pharm Res., 2011; 4(1): 252-255.
2. Sharma P, Kaushik S, Jain A, Sikarwar S M. Preliminary phytochemical screening and HPTLC fingerprinting of *Nicotiana tobacum* leaf. J Pharm Res., 2010; 3(5): 1144-1145.
3. Johnson M, Mariswamy Y, Ganaraj WE. Chromatographic finger print analysis of steroids in *Aerva lanata* L by HPTLC technique. Asian pac j Trop Biomed, 2011; 1: 428-433.
4. Kirtikar, K.R. and B.D. Basu, 1995. Indian Medicinal Plants. Vol. 1, International Book Distributors, Dehradun, India, 1995; 371-372.
5. Anonymous. The Wealth of India, Raw Materials. Publication and information Directorate, New Delhi, 1985: 116-118.
6. Chopra, R.N., I.C. Chopra, K.L. Handa and L.D. Kapur, 1958. Chopra's Indigenous Drugs of India. 2nd Edn., UN. Dhar and Sons Private Ltd., Calcutta, 1958: 408.
7. Dash, S.K. and S. Padhy. Review on ethnomedicines for diarrhoea diseases from *Orissa*: Prevalence versus culture. J. Hum. Ecol., 2006; 20: 59-64.
8. Anonymous, 1956. The Wealth of India: Raw Materials. Council of Industrial and Scientific Research, New Delhi.
9. Kirtikar, K.R. and B.D. Basu, 2003. Indian Medicinal Plant. 2nd Edn., Mohan Basu Publisher, Allahabad, India.
10. Chevallier, A., 1996. The Encyclopedia of Medicinal Plants. 1st Edn., DK Publishing Inc., New York, USA.: 259.
11. Harborne J B. *Phytochemical methods*; 3rd edition, London: Chapman and Hall, 1998.
12. Wagner H, Baldt S. *Plant drug analysis*; Berlin: Springer; 1996. R.P.W. Scott, Encyclopedia of Chromatography, 10th edn, Marcel Dekker, USA, 2001; 252-254.
13. ICH/CPMP Guidelines Q2B, Validation of Analytical Procedures– Methodology, 1996.
14. J. Cazes and R.P.W. Scott, Chromatography Theory, Marcel Decker, NY, 2002; 443-454.
15. Reviewer Guidance, Validation of Chromatographic Methods, 1994.
16. P.D. Sethi, HPTLC: Quantitative Analysis of Pharmaceutical Formulations, CBS Publications, New Delhi, 1996; 162-165.
17. E. Heftman, Chromatography Fundamentals and Applications of Chromatography and Related Differential Migration Methods. Vol. 69A, 6th edn, Elsevier, Amsterdam, 2004; 253-291.

18. British Pharmacopoeia, International edn, Vol. II, HMSO, Cambridge, 2002; Appendix 112 (IB).
19. J. Sherma, Encyclopedia of Pharmaceutical Technology, 2nd edn, Marcel Dekker, USA, 2001; 252–254.
20. ICH/CPMP guidelines Q2A, Text on Validation of Analytical Procedures, 1994.
21. USP 23, NF 19, Asian edn, United States Pharmacopeial Convention, Rockville, M.D., 982, 1225.