

A REVIEW ON KIGELIA AFRICANA

Suman Halder*¹ and Amit Sharma²

¹Student of Pharmacy, Manav Bharti University, Village- Laddo, Sultanpur, Kumar Hatti,
District Solan, Himachal Pradesh-173229.

²Asst. Professor Department of Pharmacy, Manav Bharti University Solan, Village- Laddo,
Sultanpur, Kumar Hatti, Solan, Himachal Pradesh, Pin code- 173229.

Article Received on
01 August 2017,

Revised on 22 August 2017,
Accepted on 12 Sept. 2017,

DOI: 10.20959/wjpr201711-9633

Corresponding Author*Suman Halder**

Student of Pharmacy,
Manav Bharti University,
Village- Laddo, Sultanpur,
Kumar Hatti, District Solan,
Himachal Pradesh-173229.

ABSTRACT

It occurs widely in Africa and beyond is *Kigelia africana* (Lam.) Benth, a medicinal plant with several considerable potentials and attributes. Various parts of the plant are used locally to treat diabetes, epilepsy, gynecological disorders, genital infections, cancer, ulcer, skin diseases, bacterial and fungal infections as well as being used as cosmetics. The antioxidant and anti-inflammatory properties of some parts of the plant have been explored for therapeutic purposes. Phytochemical analyses revealed the presence of a wide range of secondary metabolites. Toxicological effects of different extracts of the fruit, stem, bark and leaf have been reported. In this review, we provide up-to-date information on established toxicological and pharmacological properties, as well as phytochemical constituents responsible for these activities in *Kigelia africana*.

KEYWORDS: *Kigelia Africana*, bio-active compounds, toxicological effects, sausage tree, fruit, flower, anticancer.

INTRODUCTION

Kigelia having botanical name *Kigelia africana* (syn. *Kigelia pinnata*, *Kigelia aethiopica*) is commonly referred to as sausage or cucumber tree because of its huge sausage or cucumber-like fruit. It belongs to the family *Bignoniaceae*. Due to its vast occurrence, it has multiple names in many African languages: Uturubein (Igbo, Nigeria); Pandoro, Iyan (Yoruba, Nigeria); Rawuya (Hausa, Nigeria); Bechi (Nupe, Nigeria); Umfongothi (Zulu, South Africa); Mwegea (Swahili, Kenya, Tanzania)^[1-2] and Ebie in Igala, Nigeria. In India (Hindi) it

is known as Balmkheera.^[3] *Kigelia africana* occurs throughout tropical Africa. It specially grows well in wetter areas, spreading across riverine areas and the wetsavannah.^[3] The tree can grow up to 20m tall. It is an evergreen tree where rainfall occurs the whole year, but deciduous where there is a long dry season. The flowers as well as fruits hang down words from the on long flexible stems. Flowers are produced in panicles; they are bell-shaped, orange to reddish or purplish green and about 10cm wide. Their fragrance is mostly observed at night indicating pollination by bats, which visit them for pollen and nectar.^[4] *Kigelia africana* is famous by its huge fruits with weigh between 5 to 10kg.^[5] The fruit is indehiscent, with woody wall and heavily marked with lenticels at the surface. It is grey-brown and many seeded when matured. The fruit is eaten by several species of wild animals that also disperse the seeds in their dung.^[4] Parts of the plant are used for treating a wide range of ailments traditionally based mainly on cultural practices. The fruit is used to treat skin ailments like fungal infections, boils, psoriasis and eczema. Dysentery, ringworm, tapeworm, postpartum haemorrhage, malaria, diabetes and pneumonia are also treated with the fruit.^[3] The fruit is also applied for the treatment of solar keratosis and malignant melanoma.^[6] The bark is used to treat venereal diseases while the root is applied to treat ulcer.^[3] This review on *Kigelia Africana* is divided into biological activities such as anti-protozoal, antibacterial, antifungal activities; pharmacological properties such as anti-inflammatory and analgesic, anticancer, anti-diarrhoeal, anti-ulcer effects as well as toxicological effects with the responsible phytochemicals.

Uses of *Kigelia Africana* in traditional medicine and their pharmacological evaluation.

TRADITIONAL USES

The *Kigelia* plant have a long history of use by rural communities, especially for its medicinal properties. These properties are found in all part of the tree, including fruit, bark, roots and leaves, which are used for medical purposes.^[6-7] The *Kigelia* plant have medicinal properties not only because of its characteristics such as bitterness, astringent taste or smell but also because of forces that it seems to emit in connection with its location, orientation and association with other plants.^[8-9] The plant possesses medicinal and traditional uses like anticancer, antiulcer, anti-aging, antioxidant, and anti-malarial. It is also widely applied in the treatment of genital infections, gynecological disorders, renal ailments, fainting, epilepsy, rheumatism, sickle-cell anemia, psoriasis, eczema, central nervous system depression,

respiratory ailments, skin complaint, body weakness, leprosy, worm infestation and tumors etc.^[10]

Flower of *Kigelia*Fruit of *Kigelia*Leaves of *Kigelia*Fig. Tree of *Kigelia africana* Or Sausage Tree.

Anti-Protozoal Activity

One of the several uses of *Kigelia africana* is for treating malaria⁷. *In-vitro* studies revealed the efficacy of hexane, dichloromethane, ethyl acetate and ethanol extracts of the root bark against *Plasmodium falciparum*⁸ and *Trypanosoma brucei brucei* and *T. b. rhodesiense*⁹, the causative organisms for malaria and sleeping sickness respectively. The growth of *Entamoeba histolytica* was also inhibited by the stem bark butanol extract¹⁰. Four compounds that exhibited significant anti-plasmodia activity were isolated from the ethyl acetate extract of *Kigelia africana*. Three of the four compounds showed good activity against all the different parasite strains, the chloroquineresistant W-2 and two field isolates of *Plasmodium falciparum*, with $IC_{50} < 5 \mu M$.

Specicoside exhibited the highest activity on W-2 ($IC_{50} = 1.5 \mu M$) followed by 2β , 3β , 19α -trihydroxyurs-12-en-28-oic acid ($IC_{50} = 1.60 \mu M$) and atranorin ($IC_{50} = 4.41 \mu M$) while p-

hydroxycinnamic acid was the least active ($IC_{50}=53.84\mu M$)^[11]. Lapachol in the methanol extract of the root and another compound (a quinone) obtained from the wood show anti-malarial activity. Three iridoidsspecioside, verminiside and minecoside isolated from the butanol extract of the stem bark possess ant-amoebic activity.^[7] The anti-trypanosome activity of the stem bark and root bark extracts are attributed to 2-(1-hydroxyethyl)- naphtho-[2,3-b]-furan-4,9-quinone and three naphthoquinoids: isopinnatal, kigelinol and isokigelinol.^[9]

Antibacterial and Antifungal Activities

Various parts of *Kigelia africana* are employed to treat bacterial and fungal infections. In a study to verify these properties, crude extracts of stem bark and fruits were prepared with distilled water, ethanol or ethyl acetate. In the microtiter plate bioassay, the stem bark and fruit extracts showed similar antibacterial effects against Gram-negative and Gram-positive bacteria. A mixture of three fatty acids exhibiting antibacterial effects was isolated from the ethyl acetate extract of the fruits using bioassayguided fractionation. Palmitic acid was the major antibacterial compound in this mixture thus supporting the traditional use of the plant in therapy of bacterial infections.^[12] A biologically monitored fractionation of the methanolic extracts of the root and fruits led to the isolation of the naphthoquinones, kigelinone, isopinnatal, dehydro- α -lapachone and lapachol and the phenylpropanoids, p -coumaric acid and ferulic acid as the compounds contributing to the observed antibacterial and antifungal activities.^[11] In another antibacterial and antifungal study using the agar diffusion technique, Owolabi and co-workers^[13] reported that like amoxicillin standard antibiotics, crude ethanolic extract exhibited antibacterial and antifungal activities against *Staphylococcus aureus* and *Candida albicans* with zones of inhibition measuring 15.0 ± 0.95 and 20.75 ± 4.6 mm respectively but the aqueous extract exhibited no antibacterial or antifungal activity. The minimum inhibitory concentration for the ethanol extract was found to be 6.25 ± 1.07 mg/ml for *S. aureus* and 7.92 ± 1.52 mg/ml for *C. albicans*. In another report, it was also established that the stem bark extract inhibited a number of harmful microorganisms, including *Escherichia coli*, *Pseudomonas aeruginosa*, *Staphylococcus aureus* and *Candida albicans*.^[14] Similarly, evaluation of the antibacterial activities of ethanolic and aqueous extracts of *Kigelia africana* fruit against multi drug resistant *Pseudomonas aeruginosa* showed that the ethanolic extract was more potent than the aqueous extract.^[15]

Anti-Inflammatory and Analgesic Activities

The use of the bark, stem, twigs, leaves and fruits of *Kigelia africana* to relieve rheumatism, toothache and headache has been documented.^[16] Picerno and co-workers^[17] reported that the anti-inflammatory property of *Kigelia africana* fruit polar extract was due to the constituent verminoside. The compound is known to cause significant anti-inflammatory effects inhibiting both iNOS expression and NO release in the LPS-induced J774.A1 macrophage cell line. The ethanolic extract of the stem bark has been evaluated for analgesic property using acetic acid induced mouse writhing and hot plate reaction time; and anti-inflammatory property using the carrageenan-induced paw oedema. The extract showed a dose dependent significant reduction of the number of writhes with 500mg/kg body weight dose giving the highest reduction. In the carrageenan-induced paw oedema, a dose dependent significant inhibition was observed ($p < 0.001$) between the second and the fifth hour, confirming that the ethanolic stem bark extract has significant analgesic and anti-inflammatory properties. Inhibition of the synthesis of prostaglandins and other inflammatory mediators has been suggested to be responsible for the analgesic and anti-inflammatory properties.^[18]

Anti-Diarrhoeal Activity

One important local use of *Kigelia africana* is the use of the leaf for treating diarrhea.^[19] An administration of a dose of 100 or 200 mg/kg of aqueous leaf extract to experimental animals caused anti-diarrhea activity. It also reduced the reduced fecal output in castor oil – induced diarrhea in animals and remarkably decreased the propulsive movement of the gastrointestinal contents.^[2] On the isolated guinea pig ileum, the extract did not appreciably affect acetylcholine and histamine induced contractions. In an anti-diarrhoeal activity studied using castor oil to induce diarrhea in rats (*in vivo*) and using isolated jejunum, 500 and 1000mg/kg ethanol root extract (*in vitro*) significantly reduced the frequency of diarrheal stool and the spontaneous propulsive movement of isolated jejunum.^[2] *Kigelia africana* root extract also produced reversible inhibition of acetylcholine induced mobility of isolated rabbit jejunum. The observed spasmolytic effects of the extract may explain its continual use in the management of chronic abdominal pains associated with diarrhea.^[2]

Anti-Diabetic and Antioxidant Activities

Like many other African food^[20] and medicinal plants,^[21–24] use of *Kigelia africana* to manage diabetes is traditionally practiced and reported.^[2–3] The anti-diabetic activity and the antioxidant effect were studied.^[25] Also, in a polyherbal preparation, ADD-199,

Kigelia africana is in combination with three other plants: *Maytenus senegalenses*, *Annona senegalensis* and *Lannea welwitschii*. The anti-diabetic and antioxidant effects were investigated in streptozotocin induced diabetic C3H mice and results were compared with two allopathic hypoglycemic drugs, glibenclamide and metformin. Plasma glucose, insulin and lipids as well as liver glycogen and lipid peroxidation were measured following treatment for eight weeks. The results indicated that plasma insulin levels in normal controls at termination were about 76 $\mu\text{mol/L}$ compared to trace levels in untreated diabetic mice. Like glibenclamide, ADD-199 increased insulin levels in diabetic mice up to 70% of levels in untreated non-diabetic mice whilst metformin had no effect. Also, basal plasma glucose levels in diabetic controls (18.8 mM) were reduced to 14.0 mM by 100 mg/kg ADD-199 in < 2 weeks compared to 4 to 6 weeks for and metformin, respectively. This hypoglycemic effect of ADD-199 was associated with the alkaloidal content of the extract. Treatment with ADD-199 or the hypoglycemic agents reversed the observed elevation in plasma lipids but increased hepatic glycogen, triacylglycerol and cholesterol levels. Treatment also increased hepatic glucose uptake by isolated diaphragms and attenuated hepatic lipid peroxidation. These anti-hyperglycemic and antioxidant actions of ADD-199 were comparable to those of the maximum daily therapeutic doses of glibenclamide (0.25 mg/kg) and metformin at 50 mg/kg.^[25] Olaleye and Rocha^[26] carried out an *ex-vivo* assessment of the antioxidant property of *Kigelia africana* extracts in rat liver homogenate. Administration of different pro-oxidants: 10 μM iron (II) sulphate, (FeSO_4), 5 μM sodium nitroprusside (SNP), and 2 mM 3-nitropropionic acid led to increased formation of thiobarbituric acid reactive substances (TBARS), which indicates lipid peroxidation in the liver. Administration of *Kigelia africana* statistically ($p < 0.05$) reduced the production of TBARS in a concentration-dependent manner in all the pro-oxidant-induced oxidative stress, suggesting that the use of the plant in the treatment of various diseases, especially liver diseases could be due to its ability to act as an antioxidant.^[26] Saini and co-workers^[3] attributed the antioxidant potential of *Kigelia africana* to caffeic acid derivatives and other compounds unique to the plant.

Anti-Ulcer Effect of *Kigelia Africana*

The use of *Kigelia africana* fruit, bark and root to treat ulcer has been reported.^[3] Owolabi and Nworgu investigated the anti-ulcer activity of the ethanol extract of *Kigelia africana* stem bark in Wistar albino rats. In both preventive and curative models of ulcer respectively induced by absolute ethanol and indomethacin, the extract caused marked inhibition of

ulceration, suggesting a dose-dependent gastro-protective effect by the plant in the two models of ulcer.^[27]

Toxicity of *Kigelia africana*

Acute toxicity

In a study on the diuretic activity of aqueous extract of the bark in experimental rats, Sharma and colleagues,^[28] reported that it was safe up to 5g/kg. A determination of acute toxicity of the methanol fruit extract using male Sprague-Dawley rats showed that the extract was well tolerated by the animals as there were no observable signs of acute toxicity effects like restiveness, seizure or dizziness after the administration of 400mg/kg. However, at 6400mg/kg, the animals showed signs of toxicity like jerks and writhes with 60% death. At 12, 800mg/kg there was 80% death of the animals. The LD₅₀ was estimated from a log dose curve to be 3,981.07 mg/kg.^[29-31] In another study, 100mg/Kg aqueous extract was administered to rats induced with acetaminophen liver toxicity. The extract countered the effect of acetaminophen on the activities of aspartate aminotransferase (AST), alanine transaminase (ALT), superoxide dismutase (SOD), catalase (CAT), glutathione peroxidase (GPx) and δ -aminolevulinic acid dehydrogenase (δ -ALA-D). This suggests that the extract can act as a hepatoprotective agent against toxicity possibly through its antioxidant action.^[26]

Sub-chronic and chronic toxicity

The administration of the aqueous anti-diabetic polyherbal extract ADD-199 containing *Kigelia africana* and three other plants at a daily dose of 100 or 500mg/kg body weight over 30 days, to male Wistar albino rats appeared to show no effect on many hematological, urinary and plasma biochemical parameters. It also had no effect on some modulators of some hepatic cytochrome P450 (CYP) isozymes normally measured as indices of organ specific toxicity or potential for drug interactions. Specifically ADD-199 containing *Kigelia africana* did not affect plasma AST, ALT, alkaline phosphatase (ALP) and albumin or creatinine kinase (CK) levels.^[25] It also did not affect plasma creatinine and urea levels. Furthermore, ADD-199 neither affected packed cell volume (PCV), nor the levels of red blood cells (RBC), reticulocytes, platelets, lymphocytes and granulocyte. It however, caused significant dose-dependent reductions in white blood cell counts at day 15 with varying degrees of recovery by day 30. ADD-199 also reduced the rate of body weight increases after week 3. However, no changes were observed in organ weight at termination. The ADD-199 did not significantly affect zoxazolamine induced paralysis and pentobarbital-induced sleeping times

as well as certain CYP isozyme activities in rats, suggesting that ADD-199 had no overt organ specific toxicity and did not demonstrate a potential for drug interactions via CYP-mediated metabolism in rats following sub-chronic administration^[25] The protective effect of methanol extract of *Kigelia africana* fruit extract against cis-platin induced renal toxicity in male rats has been studied^[29] The rats treated with cisplatin for 28 days, suffered loss in body weight, elevation in blood urea nitrogen and serum creatinine levels as well as tubular necrosis. Pre-treatment with *Kigelia africana* fruit methanol extract as a prophylaxis significantly prevented these changes. Though post-treatment of animals with the extract after cisplatin treatment did not completely restore serum catalase activity, it caused some alleviating effects, suggesting that *Kigelia africana* fruit extract may protect against cisplatin-induced renal toxicity, and hence might serve as a novel agent to limit renal injury.^[29]

Cytotoxic activity

The cytotoxicity of hexane, chloroform, ethylacetate, ethanol and methanol extracts of different parts of *Kigelia africana* has been studied on *Artemia salina* using the brine shrimp lethality test (BSLT). Some workers have reported moderate toxicity of the ethanol extract of the root and fruit at a dosage of 593 and 124 µg/ml respectively while the ethyl acetate extract of the fruit was also moderately toxic at 495 µg/ml. Other workers³¹⁻³² reported a moderate cytotoxicity of ethanol extract of the fruit to *Artemia salina* at a dosage of 1000 µg/ml.

Molluscidal and Piscidal Effects

The molluscidal and piscidal effects of the aqueous extract of *Kigelia africana* bark has been reported³³. In a study to evaluate the piscidal effect of *Kigelia africana* aqueous bark extract against *Clarias gariepinus* fingerlings, graded concentrations of the extract, 40, 80, 120 ppm were prepared into which twenty fingerlings were added in replicates. The toxicity test lasted 24 hours during which observations were made at 1, 2, 4, 8, 12, 16, 20 and 24 hours. Varying degrees of mortality was recorded, with 100% death after 4 hours in the tank of 120 ppm concentration and the causative agent identified as coumarins^[32] Table 1 summarizes the toxic effects of *Kigelia africana* extracts on different species of animals.

Anticancer Activity

There are many reports in literature suggesting the use of *Kigelia africana* to either prevent or to treat cancer.^[4-34-35] In a study to determine the effect of *Kigelia africana* seed oil on cell proliferation in culture, human colon adeno carcinoma (Caco-2) and human embryonic

kidney (HEK-293) cells were maintained and treated with various concentrations (0, 20, 40, 80, 100 and 120mg/l) of *Kigelia africana* seed oil. The trypan blue dye exclusion method was used to determine cell growth 48 hours after oil treatment. The seed oil suppressed both Caco-2 and HEK-293 cell growth in a dose dependent manner. The seed oil did not cause increase cell death as the number dead cells remained unchanged under control and oil-treated conditions. The oil significantly suppressed Caco-2 cell growth compared to HEK-293 cell growth at all oil concentrations. The suppression of Caco-2 and HEK-293 cell proliferation by *Kigelia africana* seed oil suggest a potential anti-proliferative effect of the oil on the two cell lines.^[36] Methanolic extract of the root of *Kigelia Africana* contains the constituent lapachol^[34] which is reported to be effective in the treatment of solar keratosis, skin cancer and Kaposi sarcoma, an HIV-related skin ailment.^[35] Serial dilutions of standardized aqueous, ethanol and dichloromethane extracts of the stem bark and fruits of *Kigelia africana* were tested for their growth inhibitory effects against four melanoma cell lines and a renal cell carcinoma line (Caki-2) using two different assays (3-(4,5-Dimethylthiazol-2-yl)-2,5-diphenyl tetrazolium bromide, MTT and Sulforhodamine B, SRB assays). Lapachol, a possible constituent of these extracts, together with known therapeutic anti-neoplastic agents evaluated this way, showed significant inhibitory activity of the dichloromethane extract of the stem bark and lapachol in a dose-dependent and timedependent manner. Chemo-sensitivity of the melanoma cell lines to the stem bark was greater than that seen for the renal adenocarcinoma line, but in marked contrast sensitivity to lapachol was similar amongst the five cell lines, suggesting that lapachol is the active ingredient that exhibit anti-cancer property.^[37]

Toxic effects of *Kigelia africana* extracts on different species of animals

S. No.	Animal Species	Observed effect	Plant part	Extract	Dose	Route	Reference
1	Sprague-Dawley rats	Protective effect against cisplatin-induced kidney oxidant injury	Fruit	Methanol	500mg/kg 100mg/kg	Oral	29
2	Wistar albino Rats	No overt organ specific toxicity and did not demonstrate a	Fruit	Aqueous	100-500mg/kg	Oral	25

		potential for drug interaction via cytochrome P450-mediated metabolism					
3	<i>Artemia Salina</i>	Moderate toxicity	Root Fruit Fruit	Ethanol Ethanol Ethyl acetate	593µg/ml 124µg/ml 495µg/ml	Whole body	31
4	Fish	Increased opercular ventilation and tail fin beat leading to eventual fatigue and eventual death	Bark	Aqueous		Oral/whole body	52
5	<i>Artemia Salina</i>	Moderate cytotoxicity	Fruit	Ethanol	7500µg/ml	Whole body	50
6	Mice	Reversed the effects of severe hepatic necrosis induced by a large dose of paracetamol	Leaves	Aqueous	100mg/kg	Oral	26
7	<i>Artemia Salina</i>	Low toxicity	Leaves	Methanol	250µg/ml	Whole body	51

Effect on the Central Nervous System

Among the variety of uses of *Kigelia africana* is in the treatment of epilepsy, CNS stimulating activity and as antidotes against snake poisons. Snake bite antidotes are made with an infusion of the fruits, stem, leaves, twig or bark taken orally or rubbed onto the bite.^[38] The CNS stimulant activity of the ethanolic stem bark extract has been verified.^[39] The barbiturate induced sleeping time and the Rota rod bar were used to study the effect of the extract on muscle coordination in mice. The results showed that the extract at all doses tested reduced the duration of sleeping time when compared to the control group that received distilled water. This difference in sleeping time was significant ($p < 0.0001$ at all doses tested) and was found to be dose dependent. Its effect was also compared with caffeine (a known stimulant) and the extract gave a shorter duration of sleeping time compared to caffeine ($p < 0.05$ at 400 mg/kg dose) indicating best stimulant properties. In comparison with diazepam, the extract at all doses tested also gave a statistically significant shorter duration of

sleep ($p < 0.0001$). On the Rota rod, the extract had no sedative effect as the animals maintained their balance on the rod through the entire period of the experiment.^[39]

Effects on Animal Reproductive Organs and Reproductive System

In traditional medicine, sexual complaints such as infertility, poor libido, sexual asthenia and impotence are treated with herbal prescriptions containing the fruit, roots or leaves of *Kigelia africana*. A small amount of unripe fruit is chewed or an aqueous preparation of the fruit is taken orally as a sexual stimulant, and the intoxicating traditional beer to which they are added is drunk as an aphrodisiac.^[5] The fruits are also applied on the breast to improve flow of milk in lactating women.^[3] *Kigelia africana* fruit aqueous extract has been successfully used as fertility enhancing agent in rats.^[40] The steroidal components are thought to enhance reproductive ability since steroids as androgen and estrogen have shown to contain fertility properties necessary for the improvement and production of reproductive organs.^[41] A study to investigate the effects of varying dietary supplementation of *Kigelia africana* on the sperm quality and fertility in African catfish, *Clarias gariepinus* showed that dietary inclusion of the plant positively affected some parameters of sperm quality in the fish with increases in sperm counts, percentage motility, milt volume and motility duration.^[41]

Use as Cosmetics

Traditionally, *Kigelia africana* is used as cosmetic to enhance beauty.^[5] Some preparations contain extract of one or more parts of the plant, mainly the fruit, stem bark or the pendulum (where the fruit hangs from, or a product thereof). Typically, the preparation contains 50% extract mixed with carrier, excipients and colorants (Sumobrain TM). Aqueous or alcohol extracts are ideal for water based cosmetic products such as gels, lotion, water or oil emulsions and creams. The products are used to make anti-ageing and regenerating skin care products, skin tightening cosmetics such as bust firming products. Anti-inflammatory, antioxidant and antibacterial agents are other products that are commercially made from *Kigelia africana*.

Diuretic Activity

The diuretic activity of *Kigelia africana* aqueous bark extract was investigated by the determination of urine volume, electrolyte concentration and diuretic potency in male albino rats. Different concentrations of the extract, 250 and 500mg/kg were orally administered to hydrated rats and their urine output was immediately measured after 5 hours of treatment. Furosemide (10mg/kg) was used as reference drug while normal saline (0.9%) was used as

control. The result showed that the bark extract exhibited dose dependent diuretic property. The onset of diuretic action was within 1 hour and lasted up to 5 hours, with 500mg/kg displaying a potency of 0.8 and 250mg/kg, respectively. The extract also caused a marked increase in Na⁺, K⁺ and Cl⁻ labels.^[28] The result suggests that the aqueous extract possess significant diuretic activity, justifying its use in folk medicine for kidney and urinary disorders.

Nutritional Value

Kigelia africana provides a nutritious source of food during times of famine when the seeds are roasted to eat. The fruit and bark are used in the brewing process to aid fermentation and enhance the flavor of traditional beer. The fruit pulp is not edible as it may cause blistering of the tongue and skin. However, fallen fruits along with leaves and flowers are browsed or foraged by livestock and wildlife.^[5] In a study of the effect of *Kigelia africana* fruit meal (KAFM) on sperm quality of African catfish, *Clarias gariepinus*, the KAFM supplement may have enhanced nutrient utilization which is reflected by improvement in weight gain by testes.^[40] The pro-fertility effect of dried fruit meal (KAFM) was investigated on reproductive performance of female *Clarias gariepinus* fed with increasing levels for 90 days in relation to egg production and quality (number, shape, structure, fecundity) and hatchability (percentile fertilization, percentile hatching, percentile survival). The decrease in percentile deformity in hatchlings of *Clarias gariepinus* fed dietary KAFM compared with the control diet suggest that KAFM improves the quality of larvae. The highest percentile survival of hatchlings was recorded in the fish fed with dietary KAFM (100g KAFM/kg diet). Egg sizes for fish fed the control diet and dietary levels revealed no significant difference in egg size. The result showed that dried KAFM had greater fertility on male than on female *Clarias gariepinus*.^[42]

Phytochemistry of Various Parts *Kigelia Africana*

The occurrence of secondary metabolites in different parts of *Kigelia africana* is responsible for its several medicinal applications. These compounds include naphtha quinones, iridoids, sterols, coumarins, flavonoids and alkaloids among others^[3-43-44] Structures of isolated compounds have been characterized and identified using gas chromatography, ultraviolet spectroscopy, infrared spectroscopy, nuclear magnetic resonance and other spectroscopic techniques like, mass spectrometry, or gas chromatography-mass spectrometry. The use of

Kigelia africana in traditional African medicines has been verified by corresponding pharmacological properties.

Chemical Constituents of *Kigelia africana* Fruit

Gouda and colleagues^[45] reported that a new furanone derivative formulated as 3- (2'-hydroxyethyl) – 5 - (2" hydroxypropyl) dihydrofuran – 2 - (3H)one and four new iridoids named: 7- hydroxyviteoid II, 7-hydroxyeucommic acid, 7 - hydroxy-10-deoxyeucommiol and 10- deoxyeucommiol have been isolated from the fruits in addition to seven known iridoids namely, jiofuran, jioglutolide, 1-dehydroxy - 3, 4 - dihydroaucubigenin, des – p – hydroxy benzoyl kisasagenol B, ajugol, verminoside and 6- transcaffeoyl ajugol. Further phytochemical investigation of the fruits of *Kigelia Africana* yielded a new phenylpropanoid derivative identified as 6-p-coumaroylsucrose together with ten known phenylpropanoid and phenylethanoid derivatives and a flavonoid glycoside.^[46] A biologically monitored fractionation of the fruit led to the isolation and identification of the naphthoquinones, kigelinone, isopinnatal, dehydro-alpha lapachol and the phenylpropanoids p-coumaric acid and ferulic acid.

Chemical Constituents of *Kigelia africana* Stem

A study of the antimicrobial properties of the aqueous stem bark extract of *Kigelia Africana* revealed the presence of two naphtha quinones kigelinone and isopinnatal.^[44-3] Three known iridoids: specioside, verminoside and minecoside have also been isolated from the stem bark^[47] The dichloromethane extract of the stem bark contain naphthoquinones which possess anti trypanosomal properties^[3-4] while kigelin, β - sitosterol, 1, 3-dimethylkigelin and ferulic acid have been isolated from the bark, while the isolation of kigelinol from the wood and balaphonin from the stem bark have been reported.^[19-48]

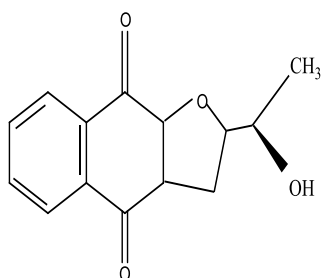
Chemical Constituents of *Kigelia africana* Root

Earlier workers^[47] reported the isolation and identification of the naphthoquinones, kigelinone, isopinnatal, dehydro-alpha-lapachol and the phenylpropanoids p-coumaric acid and ferulic acid from the root of *Kigelia africana*. Steroids, iridoids and coumarins have been isolated from the root bark^[48] as well as three isocoumarins: 6-methoxymellein, kigelin and 6-demethylkigelin.^[49] The isolation of kiglin and 6 methoxymellein together with two known compounds, stigmasterol and lapachol from the root has also been reported^[37] Naphthoquinones that possess anti-trypanosomal and antiprotozoal properties^[50-53] have been

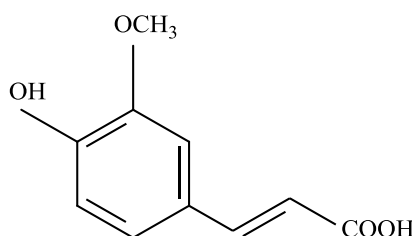
reported in the dichloromethane extract of the root^[3-4-54-55] while two non-quinonoid aldehydes, norviburtinaland pinnatal have been obtained from the root bark.^[4-37]

Chemical Constituents of *Kigelia africana* Leaf

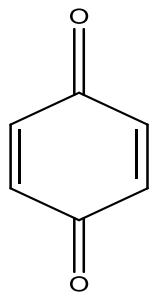
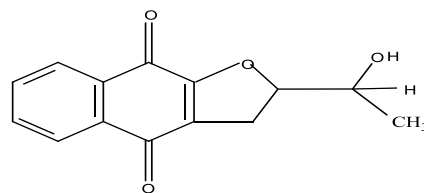
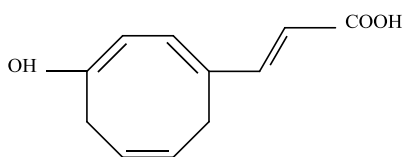
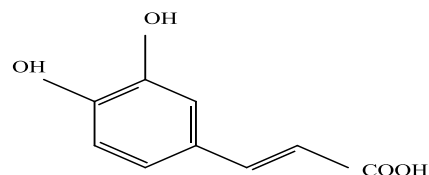
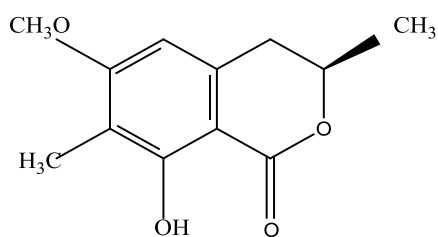
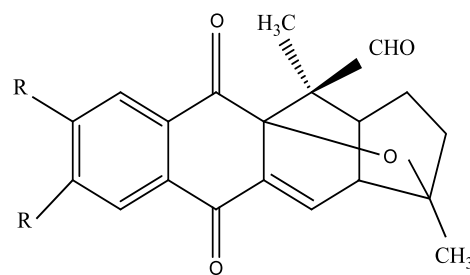
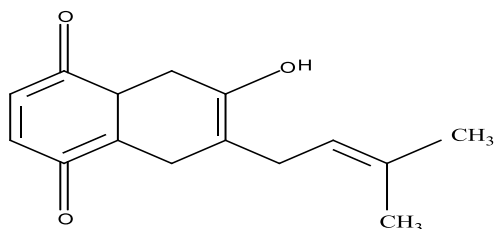
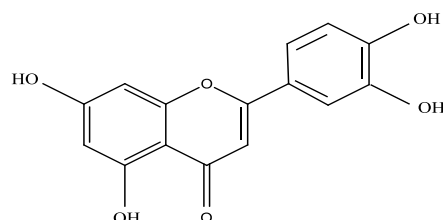
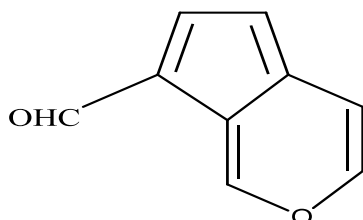
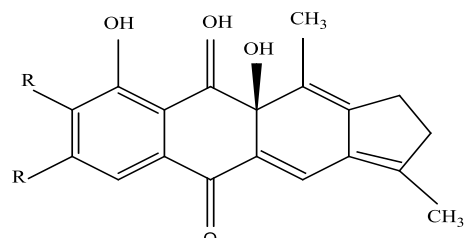
The hexane extract of the leaf of *Kigelia Africana* has been reported to be rich in hydrocarbons and some volatile compounds. In a study that qualitatively and quantitatively analyzed the hexane extract for various chemical compositions, it was revealed to contain twelve compounds with the major ones identified as hentriacontane, 1-tricosene, 11- (2, 2-dimethylpropyl)heneicosane, 2, 6, 10-trimethyldodecane, penta fluoroheptadecyl ester, 2-ethylhexyloctadecyl sulfurous acid ester, heneicosane and hexyloctylsulfurous acid ester^[55,56,57] Others are 4, 4-dimethylundecane, methyl-12-methyltetradecanoate, 1-iodohexadecane and 1-iododecane. Hentriacontane have been reported to have a possible anti-tumor activity while methyl-12-methyltetradecanoate has also been reported for its inhibition capacity on the development of conical angiogenesis, which is responsible for blindness and other infections^[44] Flavonoids and iridoids^[45] and a 7- O- glucoside^[9-37] have also been found in the leaves (Table 2). The structural formulae of some of the chemical constituents isolated from *Kigelia africana* are presented in Fig. 1. Considering the pharmacological and therapeutic efficacies of many phyto chemicals isolated from different parts of *Kigelia africana* in experimental models, it would be worthwhile to synthesize the active components in large quantities for testing in higher animals like monkeys and chimpanzees preparatory to large scale clinical trials in humans before their deployment as therapeutic agents in humans. However, since the synthesis of many phyto chemicals can be unbelievably difficult,^[21] it is recommended that this plant be included as protected species in communities where they are found, and plantations of this plant be established as immediate source of the identified active ingredients for the clinical trials.

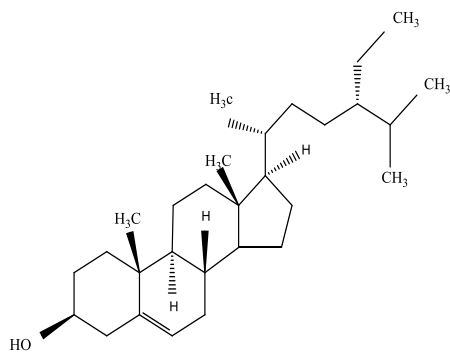


2-acetylnaphtho [2, 3-b] furan-4, 9-quinone

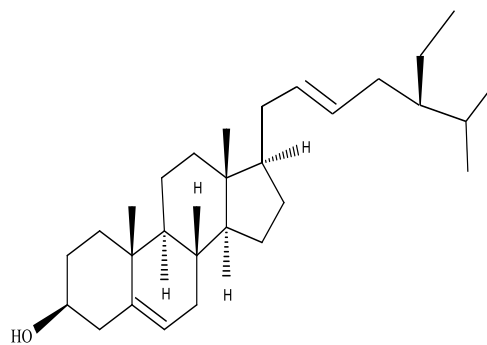


Caffeic acid

**1, 4 Benzoquinone****2-(1-Hydroxyethyl)-2-acetylnaphtho-[2,3-b]-furan-4,9-dione****Coumaric acid****Ferulic acid****Kigelin****Kigelinol Isokigelinol****Lapachol****Luteolin****Norviburtinal****R=OH, R' = H Pinnatal****R=H, R' =OH Isopinnatal**



Sitosterol



Stigmasterol

Structural formulae of some compounds found in *Kigelia africana*

S/No	Compound	Plant Part	Bioactivity	Reference
1.	Kigelinone	Stem bark	Antibacterial, Antifungal	48-14-11
2.	Isopinnatal	Stem bark	Antibacterial, Antifungal, Anti-malaria	14-8-35-11
3.	Kigelinol	Stem bark	Anti-malaria	8
4.	Isokigelinol	Stem bark	Anti-malaria	9-35
5.	Lapachol		Anti-cancer	11-34
6.	Dehydro-alpha-lapachone	Stem bark		11
7.	2-(1-hydroxyethyl)naphtha [2,3-b] furan-4,9- quinine Kigeliol Balaphonin B-Sitosterol	Stem bark Wood Stem bark Bark	Anti-trypanosoma	9-53-54-55
8.	Caffeic acid	Bark	Cytotoxicity	12
9.	Specioside	Stem bark	Antibacterial, Antifungal	47
10.	Verminoside	Stem bark		47-45-16
11.	Minecoside	Stem bark		47
12.	Carbohydrates, alkaloids, tannins, saponins and glycosides	Fruit		43
13.	7-Hydroxyviteoid II	Fruit		45
14.	7-Hydroxyeucommic acid	Fruit		45
15.	7-Hydroxy-10-deoxyeucomiol	Fruit		45
16.	10-Deoxyeucommiol	Fruit		45
17.	Jiofuran	Fruit		45
18.	Jioglutolide	Fruit		45
19.	1-Dehydroxy-3,4-dihydroxy-3,4-dihydroaucubigenin	Fruit		45
20.	des-p-hydroxybenzoyl kisasagenol B	Fruit		45
21.	Ajugol	Fruit		45
22.	6-trans caffeoyl ajugol	Fruit		45
23.	6-p-Coumaroyl sucrose	Fruit		45
24.	β -Sitosterol	Fruit		54-55

25.	Quercetin	Fruit		12
26.	Luteolin	Fruit		12
27.	3-(2'-hydroxyethyl)-5-(2''-hydroxypropyl) Dihydrofuran-2-(3H)one Isocoumarins	Fruit		45
28.	6-Methoxymellein	Root		56
29.	Kigelin	Root		56
30.	6-Demethylkigelin	Root		56
31.	3-Dimethylkigelin	Root		56
32.	Phenylpropanoids p-Coumaric acid	Root bark	Antibacterial, Antifungal	11-12
33.	Ferulic acid	Root bark		11-12
34.	Stigma sterol	Root bark		56
35.	Non-quinonoid aldehydes Norviburtinal	Root bark		57
36.	Pinnatal	Root bark		57
37.	Hydrocarbons n-Hentriacontane	Leaf	Antitumor	44
38.	1-Tricosene	Leaf		44
39.	11-(2,2-Dimethylpropyl)heneicosane	Leaf		44
40.	2,6,10-Trimethyldodecane	Leaf		44
41.	Heneicosane	Leaf		44
42.	4,4-Dimethylundecane	Leaf		44
43.	Pentafluoroheptadecyl ester	Leaf		44
44.	2-ethylhexyloctadecyl sulphurous acid ester	Leaf		44,12
45.	Hexyloctyl sulphurous acid Ester	Leaf		44
46.	Methyl-12-methyltetradecanoate	Leaf	Inhibition of corneal angiogenesis	44
47.	1-Iododecane	Leaf		44
48.	11-Iodoheptadecane	Leaf		44

SUMMARY

Kigelia Africana is a medicinal plant with lot of properties and activities. This plant possesses various secondary metabolites. It occur widely with lot of common names. *Kigelia Africana* have biological as well as pharmacological activities. The whole plant is very much useful, as its every part like stem, fruit, root, bark, leaves etc. All have a medicinal value. This plant is highly which in pharmaceutical activities.

Geographical Abstract



Different parts of *Kigelia africana*

(Fruit, Flower, leaves and seeds)

Qualitative Phytochemical analysis

- Alkaloids
- Flavonoids
- Tannins
- Saponins
- Steroids
- Cardiac Glycosides
- Lapachol
- Kigelin

Note-(+) Means Positive, (-) Means Negative

Phytochemical	Fruit	Leaves	Flower	Seeds
Alkaloids	+	+	+	+
Flavonoids	+	+	+	+
Tannins	+	+	+	+
Saponins	+	+	+	+
Steroids	-	-	-	-
Glycosides	+	+	+	+
Xanthenes	-	-	-	-
Terpenoids	+	+	+	+
Triglycerides	-	-	-	-
Kigelin	+	+	+	+
Lapachol	+	+	+	+

CONCLUSION

With the extensive folk medicinal applications and, wide occurrence of *Kigelia africana*, considerable interest has developed to scientifically prove the medicinal claims. The studies

have led to the revelation that the diverse groups of natural products such as coumarins, naphtha quinones, sterols among others are present in different parts of the plant. Also, justlike in other members of the Bignoniaceae family, *Kigelia africana* is known for iridoids that accumulate differentially in flowers and roots. Because of this it is needed to isolate and quantification of such chemicals for clinical trials and Toxicological trials in higher animals like apes, monkeys and chimpanzees preparatory to clinical trials in human and subsequent deployment as viable chemical lead for development of new class of therapeutic agents for treatment and management of various diseases that afflict man and his domestic and economic animals. Thus to conclude by considering all the scientific reports from previous researchers, the present review will give an insight information about *Kigelia pinnata* because of its various pharmacological application like analgesic, anti-diabetic, wound healing, antioxidant and many more. The therapies which are adapted from the allopathy are limited due to its efficacy, serious adverse effects and costly preparations.

REFERENCES

1. Mann A, Gbate M. Umar AN. Medicinal and Economic Plants of Nupeland, Jube- Evans Books & Publications, Bida, 2003; 1: 277.
2. Otimenyin SO. Uzochukwu DC. Spasmolytic and Anti-diarrhea effects of the bark of *Erythrina senegalensis* and root of *Kigelia africana*, Asian J Pharm Clin Res., 2012; 3: 11-14.
3. Saini S, Kaur H, Verma B, Ripudaman, Singh S. *Kigelia africana* (Lam.) Benth. An overview. Nat Prod Rad, 2009; 8(2): 190-97.
4. Olatunji AG. Atolani O. Comprehensivescientific demystification of *Kigelia africana*: A review. Afr J Pure Appl Chem, 2009; 3(9): 158-64.
5. Oyelami OA. Yusuf KO. Oyelami AO. The use of *Kigelia africana* in the management of polycystic ovary syndrome (PCOS). Chin Med, 2012; 3: 1-3.
6. Jackson S, Beckett K. Sausage Tree *Kigelia pinnta*: An Ethnobotanical and Scientific Review, Herbal Gram; American Botanical Council, 2012; 94: 48-59.
7. Gessler M, Msuya D, Nkunya M, Mwasumbi L, Schar A, Heinrich M, Tanner M. Traditional healers in Tanzania: The treatment of malaria with plant remedies. J Ethnopharmacol, 1994; 48: 131-144.
8. Weiss CR, Moideen SVK, Croft SL, Houghton PJ. Activity of extracts and isolated Naphtha quinones from *Kigelia pinnata* against Plasmodium falciparum, J Nat Prod, 2000; 63: 1306-1309.

9. Moideen SVK, Houghton PJ, Rock P, Croft SL, Aboagye-Nyame F. Activity of extracts and naphthoquinones from *Kigelia pinnata* against *Trypanosoma brucei brucei* and *Trypanosoma brucei rhodesiense*. *Planta Med*, 1999; 65(6): 536-540.
10. Bharti N, Singh S, Fermida N, Amir A. Isolation and *in vitro* antiamebic activity of iridoids isolated from *Kigelia pinnata*, *Arkivoc*, 2006; 69-76.
11. Binutu OA, Adesogan KE, Okogun JI. Antibacterial and antifungal compounds from *Kigelia pinnata*, *Planta Med*, 1996; 62(4): 352-353.
12. Grace OM, Light ME, Lindsey KI, Mulholland DA, van Staden J, Jager AK, Antibacterial activity and isolation of active compounds from fruit of the traditional African medicinal tree *Kigelia africana*, *South Afr J Bot*, 2002; 68(1): 220-222.
13. Owolabi OJ, Omogbai EKI, Obasuyi O. Antifungal and antibacterial activities of the ethanolic and aqueous extracts of *Kigelia africana* (*Bignoniaceae*) stem bark. *Afri J Biotechnol*, 2007; 6(15): 1677-80.
14. Akunyili DN, Houghton PJ, Raman A. Antimicrobial activities of the stem bark of *Kigelia pinnata* *J Ethnopharmacol*, 1991; 35(2): 173-177.
15. Tyagi A, Singh V, Bharadwaj M, Kumar A, Thakur K. Isolation and antibacterial susceptibility testing of multi drug resistant *Pseudomonas aeruginosa* causing urinary tract infection. *J Chem Pharm Res*, 2011; 3(4): 342-347.
16. Houghton PJ. The sausage tree (*Kigelia pinnata*) ethnobotany and recent scientific work, *South Afr J Bot*, 2002; 68(1): 14-20.
17. Picerno P, Autore G, Marzocco S, Meloni M, Sanogo R, Aquino RP. Antiinflammatory activity of verminoside from *Kigelia africana* and evaluation of cutaneous irritation in cell cultures and reconstituted human epidermis. *J Nat Prod*, 2005; 68: 1610-16.
18. Owolabi OJ, Omogbai EKI. Analgesic and anti-inflammatory activities of the ethanolic stem bark extract of *Kigelia africana* (*Bignoniaceae*), *Afri J Biotechnol*, 2008; 6(5): 582-85.
19. Akah PA. Antidiarrheal activity of *Kigelia africana* in experimental animals, *J Herbs Spices Med Plants*, 1998; 31-38.
20. Atawodi SE. Evaluation of the hypoglycemic, hypolipidemic and antioxidant effects of methanolic extract of "Ata-ofa" polyherbal tea (*A-Polyherbal*) in alloxan-induced diabetic rats. *Drug Inv Today*, 2011; 3(11): 270-76.
21. Gupta R, Mathur M, Bajai VK, Katarachiya P, Yadav S, Kamal R, Gupta RS. Evaluation of Anti-diabetic and antioxidant activity of *Moringa oleifera* in experimental diabetes. *J Diabetes*, 2012; 4(2): 164-171.

22. Gidado A, Ameh DA. Atawodi SE, Ibrahim S. Antidiabetic Effect of *Nauclea latifolia* Leaf Ethanolic Extract in Streptozotocin-induced Diabetic Rats. *Pharmacogn Res.*, 2009; 1: 392-95.
23. Okine LKN. Nyarko AK, Osei-Kwabena N, Oppong IV, Barnes F. Ofosuhene, M. The antidiabetic activity of the herbal preparation ADD-199 in mice: A comparative study with two oral hypoglycaemic drugs. *J Ethnopharmacol.* 2004; 97(1): 31-8.
24. Nyarko AK. Okine LKN. Wedzi RK. Addo PA, Ofosuhene M. Sub-chronic toxicity studies of the antidiabetic herbal preparation ADD-199 in the rat: Absence of organ toxicity and modulation of cytochrome P450. *J Ethnopharmacol.* 2005; 97(2): 319-25.
25. Olaleye MT. Rocha JB. Commonly used medicinal plants exhibit distinct *in-vitro* antioxidant activities against hepatotoxins in rat liver. *Expl Toxicol Path.* 2007; 58(6): 433-8.
26. Owolabi O, Nworgu Z. Antiulcer effect of the ethanol extract of *Kigelia Africana* (Lam.) Benth (*Bignoniaceae*), *The Internet J Pharmacol*, 2009; 7: 1.
27. Sharma US, Singh A. Agarwal V. Diuretic activity of *Kigelia pinnata* bark extract. *J Pharmacol Res.*, 2010; 1(2): 17-20.
28. Azu OO, Duru FIO, Osinubi AA, Noronha CC, Elesha SO, Okanlawon AO. Protective agent, *Kigelia africana* fruit extract, against cisplatin-induced kidney injury in Sprague-Dawley rats. *Asian J Pharm Clin Res*, 2010; 3(2): 84-8.
29. Zofou D, Kengne AB, Tene M, Ngemenya MN, Tane P, Titanji VP. *In vitro* antiplasmodial activity and cytotoxicity of crude extracts and compounds from the stem bark of *Kigelia africana* (Lam.) Benth (*Bignoniaceae*). *Parasitol Res.*, 2011; 108(6): 1383-90.
30. Adoum OA. Determination of toxicity effects of some savannah plants using brine shrimp test (BST) *Int J. P App. Sci.*, 2008; 2(3): 1-5.
31. Fafioye OO. Plants with piscicidal activities in Southwestern Nigeria. *Turk. J Fish Aquat Sci.*, 2005; 5: 91-97.
32. Ashraf M, Ayub M, Sajjad T, Elahi N, Ali I, Ahmed Z. Replacement of rotenone by locally grown herbal extracts. *Int J Agr Biol.*, 2010; 12: 77-80.
33. Hussain H, Krohn K, Ahmad UV, Miana GA, Green IR. Lapachol: An overview, *Arkivoc*, 2007; 2: 145-171.
34. Jackson SJ, Houghton PJ, Retsas S, Photiou A, Cytotoxicity of Norviburtinal and Isopinnatal from *Kigelia pinnata* against cancer cell lines, *Planta Med.*, 2000; 66: 758-761.

35. Chivandi E, Cave E, Davidson BC, Eriwanger KH, Mayo D, Madziva MT. Suppression of Caco-2 and HEK-293 cell proliferation by *Kigelia africana*, *Mimusops zeyheri* and *Ximenia caffra* seed oils. *In vivo Int J Exp Clin Pathophysiol Drug Res.*, 2012; 26(1): 99-105.
36. Houghton PJ, Photiou A, Uddin S, Shah P, Browning M, Jackson SJ, Retsas, S. Activity of extracts of *Kigelia pinnata* against melanoma and renal carcinoma cell lines. *Planta Med*, 1994; 60(5): 430-433.
37. Grace OM, Davis SD. *Kigelia Africana* (Lam.) Benth. [Internet] Record from Protabase. Oyen LPA, Lemmens RHMJ (Editors) PROTA (Plant Resources of Tropical Africa/ Ressources vegetales del' Afrique tropicale), Wageningen, Netherlands, 2010; (1): 13.
38. Owolabi OJ, Amaechina FC, Eledan AB. Central nervous system stimulant effect of the ethanolic extract of *Kigelia africana*, *J Med Plants Res.*, 2008; 2(2): 20-23.
39. Abioye AIR, Duru FIO, Noronha CC, Okanlawon AO. Aqueous extract of the bark of *Kigelia Africana* reverses early testicular damage induced by methanol extract of *Carica papaya*. *Nig J Hlth Biomed Sci.*, 2003; 2(2): 81-7.
40. Adeparusi EO, Dada, A. A. Alale OV. Effects of Medicinal Plant (*Kigelia Africana*) on Sperm Quality of African Catfish *Clarias gariepinus* Broodstock. *J Agric Sci.*, 2010; 2(1): 193-99.
41. Dada AA, Adeparusi EO. Alale OV. Dietary dried *Kigelia africana* as fertility enhancer in female *Clarias gariepinus*. *Agric Biol J North Am.*, 2010; 1(5): 791-95.
42. Owolabi O. J, Omogbai EKI, Analgesic and anti-inflammatory activities of the ethanolic stem bark extract of *Kigelia africana* (*Bignoniaceae*), *Afr J Biotechnol*, 2007; 6(5): 582-585.
43. Atolani O, Olatunji AG. Epicuticular Wax and Volatiles of *Kigelia pinnata* Leaf Extract. *Ethnobotan Leaflet*, 2010; 14: 797-06.
44. Gouda YG, Abdel-baky AM, Darwish FM, Mohammed KM, Kasai R, Yamasaki, K. Iridoids from *Kigelia pinnata* DC. *Fruits, Phytochem*, 2006; 63(8): 887-92.
45. Gouda YG, Abdel-baky AM, Mohammed KM, Darwish FM, Kasai R, Yamasaki K. Phenylpropanoid and phenylethanoid derivatives from *Kigelia pinnata* DC. *Fruits, Nat Prod Res.*, 2006; 20(10): 935-939.
46. Neelam B, Shailendra S, Fermida N, Amir A. Isolation and in vitro anti amoebic activity of iridoids isolated from *Kigelia pinnata*. *General papers. Arkivoc(x)*, 2006; 69-76.
47. Akunyili DN, Houghton PJ. Monoterpenoids and naphthoquinones from *Kigelia pinnata* bark, *Phytochem*, 1993; 1015-1018.

48. Folashade OO, Olufunsho SBO, Quantitative evaluation of the antipsoriatic activity of sausage tree (*Kigelia africana*). African J of Pure App Chem, 2012; 6(13): 214-218.
49. Kolodziej H, Protective role of *Kigelia africana* fruits against benzo (a) pyreneinducedfore- stomach tumourigenesis inmice and against albumen-inducedinflammation in rats. Pharm Pharmacol Lett, 1997; 23(7): 67-70.
50. Ufodike EBC, Omoregie E, Acute toxicity of water extract of barks of *Balanitesaegyptiaca* and *Kigelia africana* to *Oreochromis niloticus*, Aquaculture Research, 1994; 25(9): 873-879.
51. Houghton PJ. The sausage tree (*Kigelia pinnata*), Ethnobotany and recent scientific work, Afr Botanicals, 2007; 1-10.
52. Desai HK, Gawad DH, Govindachari TR, Joshi BS, Kamat VN Modi JD. Chemical Investigation of some Indian plants, Indian J Chem, 1971; 9: 611-613.
53. Khan MR, Mlungwana SM, γ -Sitosterol. A cytotoxic sterol from *Markhamiaazanzibarica* and *Kigelia africana*, Fitoterapia, 1999; 70(1): 96-97.
54. Govindachari TR, Patankar SJ, Visananthan N. Isolation and structure of two new dihydroiso isocoumarins from *Kigeliapinnata*, Phytochemistry, 1971; 10: 1603-1606.
55. Joshi KC, Singh P, Taneja S, Cox PJ. New terpenoid aldehydes from *Kigelia pinnata*: Crystal structure of pinnatal, Tetrahedron, 1982; 38: 2703-2708.
56. Lal SD, Yadar BK. Folk Medicines of Kurukshetra district (Haryana), India Econ. Bot, 1983; 37: 299-305.
57. Grace OM, Davis SD. *Kigelia Africana* (Lam.) Benth. Record from protabase. Oyen LPA, Lemmens RHMJ Wageningen, Netherlands, 2003; 1.
58. Mukherjee P. Quality Control of Herbal Drugs. Eastern Publishers (Business Horizons Ltd.) New Delhi, 2002 4(4): 816-81.
59. Pitta Joffe Pretoria National Botanical Garden, August 2003.