

**REVIEW ARTICLE: METHOD DEVELOPMENT AND VALIDATION  
FOR SIMULTANEOUS ESTIMATION OF AMPICILLIN AND  
CLOXACILLIN CAPSULES BY USING RP-HPLC**

**M. Sandya Madhuri\*, Kuppli Sri Kavya<sup>1</sup>, K.S.M.L.S Kavya<sup>2</sup> and Korukonda Rama  
Priyanka<sup>3</sup>**

<sup>1</sup>M.Pharmacy, Assistant Professor, Department of Pharmaceutical Analysis and Quality Assurance, School of Pharmaceutical Sciences and Technologies, Jawaharlal Nehru Technological University Kakinada, Andhra Pradesh, East Godavari, 533004, India.

<sup>2,3,4</sup>Students, Department of Pharmaceutical Analysis and Quality Assurance, School of Pharmaceutical Sciences and Technologies, Jawaharlal Nehru Technological University Kakinada, Andhra Pradesh, East Godavari, 533004, India.

Article Received on  
25 August 2020,

Revised on 15 Sept. 2020,  
Accepted on 05 Oct. 2020

DOI: 10.20959/wjpr202013-18958

**\*Corresponding Author**

**M. Sandya Madhuri**

M.Pharmacy, Assistant Professor, Department of Pharmaceutical Analysis and Quality Assurance, School of Pharmaceutical Sciences and Technologies, Jawaharlal Nehru Technological University Kakinada, Andhra Pradesh, East Godavari, 533004, India.

**ABSTRACT**

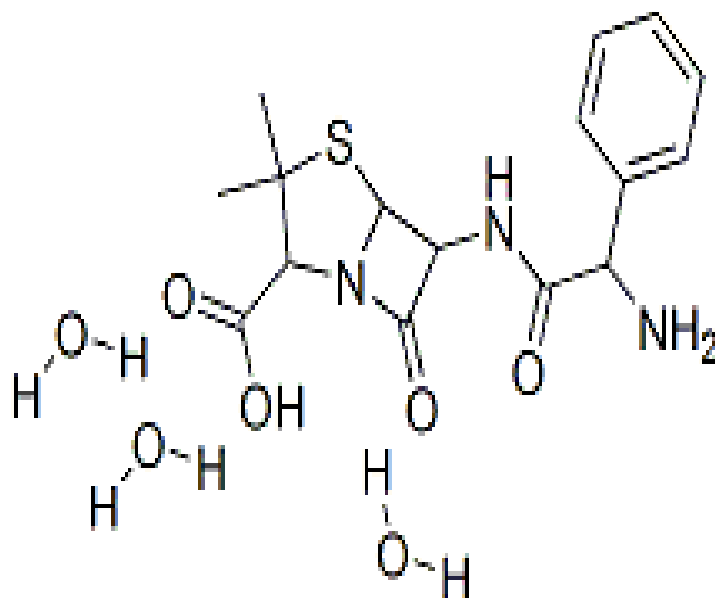
A simple, accurate, precise, and rapid reverse phase high performance liquid chromatographic isocratic method has been developed for the quantification of method AMPICILLIN and CLOXACILLIN capsule (oral dosage form). The chromatographic separation was attained on P. Hypersob C18 (250mmx4.6, 5 $\mu$ m,) with precolumn as the stationary phase at ambient temperature. The mobile phase was composed of acetonitrile and 0.002 M phosphate buffer pH 3.0, 36:64 with a flow rate of 1.2ml/min, and UV detection at 225nm the run time was 10 minutes. The injection volume was 20. The retention time of ampicillin and cloxacillin were 1.32 minutes and 6.1 minutes respectively. The linearity in the ampicillin drug concentration range of 0.1814  $\mu$ g/mL to 0.2236  $\mu$ g/mL and cloxacillin the drug concentration range is 0.1718  $\mu$ g/mL to 0.2584  $\mu$ g/mL. The correlation coefficient were greater than 0.99. The mean percentage recovery of ampicillin and cloxacillin at 80%, 100%, and 120% concentration levels were for 105.43%, 103.78%, 101.36 & 105.27 and 108.69% respectively. The results

obtained show a method that is simple, rapid, and precise. It can be used for the estimation of Ampicillin, Cloxacillin in single as well as combination dosage forms.

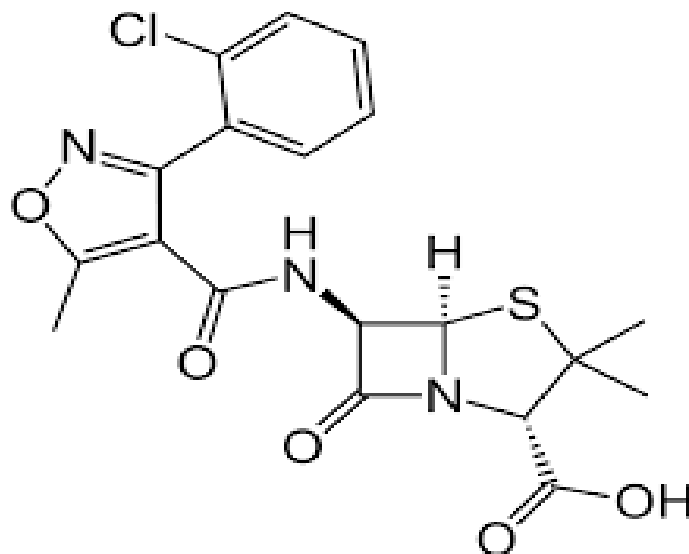
**KEYWORDS:** Ampicillin, Cloxacillin, RP-HPLC, Validation.

## 1. INTRODUCTION

Analysis of drugs present in combined pharmaceutical dosage forms is quite challenging problem and hence attempts were made to develop analytical methods for relative substances of drugs containing ampicillin and cloxacillin in capsule drug dosage forms. Chemically ampicillin IUPAC name is (2S, 5R, 6R)-6-[(2R)-2-amino-2-phenyl acetamido]-3, 3-dimethyl-7-oxo-4-thia-1-azabicyclo[3.2.0]heptane-2 carboxylic acid. Chemical structure of ampicillin trihydrate is depicted in figure 1 (Audumbar Digambar Mali et al., 2015). Ampicillin is a  $\beta$ -lactam antibiotic. It can sometimes result in allergic reactions that range in severity from a rash to potentially lethal anaphylaxis. Ampicillin is able to penetrate gram positive and some gram-negative bacteria.



**Figure 1: Structure of ampicillin.**



**Figure 2: Structure of cloxacillin.**

Cloxacillin chemically known as monosodium(2*S*,5*R*,6*R*)-6-[*o*-(2-chlorophenyl)-5-methyl-4-isoxazolecarboxamido]-3,3-dimethyl-7-oxo-4-thia-1-azabicyclo-[3.2.0]-heptane-2-carboxylate monohydrate, is a semi-synthetic antibiotic in the same class as penicillin. It is used against staphylococci that produce  $\beta$ -lactamase. The chemical structure of cloxacillin sodium is depicted in figure 2.

Analysis of drugs present in combined pharmaceutical dosage forms is a quite challenging problem and hence attempts were made to develop analytical methods for relative substances of drugs in ampicillin and cloxacillin dosage forms. All the proposed methods are simple, selective, reproducible, sensitive and accurate with good precision.

According to literature survey, various analytical methods were reported for the estimation of Atenolol<sup>[1]</sup> and Nifedipine<sup>[2]</sup> either alone or combination with other drugs. More over various analytical methods like UV<sup>[3]</sup>, HPLC<sup>[4-6]</sup> were reported for simultaneous estimation of analysis of ampicillin and cloxacillin. Some RP-HPLC were not economical in terms of mobile phase compositions, column dimensions and runtimes. Hence there is a need for the development of newer method for estimation of ampicillin and cloxacillin present in tablet to overcome the above discussed hurdles. So it is felt worthwhile to develop a simple, rapid, accurate, precise and more economical stability indicating high performance liquid chromatographic method for ampicillin and cloxacillin using RP-HPLC technique. The present study was planned to develop a faster isocratic elution for estimation of ampicillin and cloxacillin. The developed method was planned to validate as per ICH guidelines in

terms of accuracy, precision, specificity, limit of detection, limit of quantification, linearity, range and robustness.

## 2. MATERIALS AND METHODS

### Chemicals and reagents

Ampicillin and Cloxacillin were obtained from Teena (P) Limited, Hyderabad, India, as a gift samples. Acetonitrile (HPLC grade) and methanol(HPLC grade), Water(HPLC grade) were purchased from E. Merck (India) Ltd., Mumbai, India; While sodium dihydrogen orthophosphate(AR grade) and ortho phosphoric acid (AR grade) were purchased from Rankem, India.

### Instrumentation and chromatographic conditions

The liquid chromatographic system consisted of Shimadzu HPLC model with LC software containing variable wavelength programmable UV detector. Shimadzu analytical balance, model (Unibloc) was used for weighing purpose. Chromatographic analysis was performed on P.Hypersob C18 (150X 4.6MM, 5 $\mu$  particle size) column. The separation was carried at 30<sup>0</sup>C using a mobile phase consisting of phosphate buffer (pH 3.0) and acetonitrile in the ratio of 36:64% v/v, at a flow rate of 1.2 ml/min. The UV detection wavelength was 225nm, injection volume was 20  $\mu$ l and runtime was 10min. Mixture of acetonitrile and water in the ratio of 45:55% v/v was used as diluent.

### Standard preparation

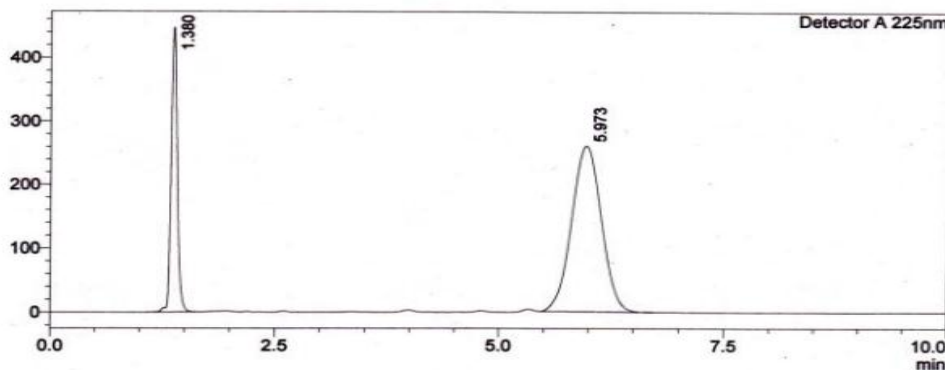
Accurately weighed 57.77mg of Ampicillin and 54.70 mg of cloxacillin and transferred to 50ml volumetric flask add sufficient amount of mobile phase and sonicate for 15 minutes and make up to the mark. Dilute 5ml of the solution to 25ml with mobile phase.

### Preparation of sample solution

Twenty capsules powder was taken, 113.15mg was weighed and transferred into a 50ml calibrated volumetric flask and dissolved using mobile phase. This mixture was sonicated for 20 minutes and makes up the volume upto the mark with mobile phase. Dilute 5ml with 25 ml of mobile phase.

Separately inject both the standard (5 injections) and sample preparation (6 injections) into the chromatographic system and the peak area responses.

$$\% \text{ Assay} = \frac{\text{sample area}}{\text{standard area}} \times \frac{\text{standard weight}}{\text{sample weight}} \times \frac{\text{potency}}{100} \times 100$$



Chromatogram for assay

### 3. RESULTS AND DISCUSSION

#### Method validation<sup>[7]</sup>

After method development, the validation of the proposed method has been performed in accordance with ICH guidelines which include accuracy, precision, specificity, linearity, limit of detection, limit of quantification, robustness and ruggedness.

#### System suitability

System suitability was studied by injecting six replicates of the standard solutions of 10  $\mu$ l into the HPLC system after equilibrating the column with the mobile phase for 30 min prior to injection. The system suitability parameters were evaluated from standard chromatograms by observing theoretical plates, retention time, tailing factor and calculating % RSD of peak area and results obtained were within acceptable limits (Tailing factor below 2.0 and theoretical plates > 2000) as shown in table 1.

Table 1: System suitability parameters for Ampicillin and Cloxacillin.

Parameters	Obtained values	
	Amp	Clox
Theoretical plates	5727	5727
Tailing factor	1.21	1.05
Resolution	10.197	

#### Specificity

By comparing the chromatograms of blank, placebo, standard and sample, it was found that there is no interference due to excipients in the tablet formulation and also found good correlation between the retention times of standard and sample.

### Precision

The precision of the method was demonstrated by inter-day and intra- day variation studies by injecting six replicates of standard and sample solutions into the chromatographic system and the response of drug peak and %RSD were calculated as shown in Table 2.

**Table 2: System precision for Ampicillin and Cloxacillin.**

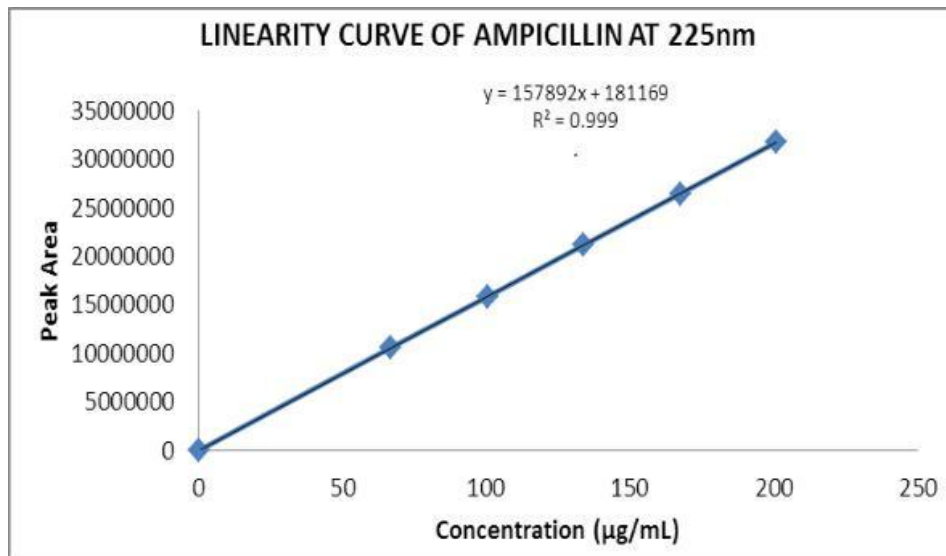
System Precision					
Peak response (intra)			Retention time (inter)		
Injections	Ampicillin	Cloxacillin	Injections	Ampicillin	Cloxacillin
Injection-1	1751702	5154127	Injection-1	1.385	5.991
Injection-2	1754530	5139735	Injection -2	1.382	5.961
Injection-3	1755692	5117376	Injection-3	1.387	5.922
Injection-4	1772564	5163704	Injection-4	1.391	6.103
Injection-5	1753397	4976086	Injection-5	1.381	6.005
Injection -6	1753210	4991977	Injection-6	1.381	6.069
Mean	1756849	5090499	Average	1.38	6.01
Standard deviation	78114.45	84086.08	Standard deviation	0	0.07
%RSD	0.44	1.64	%RSD	0.28	1.12

### Linearity

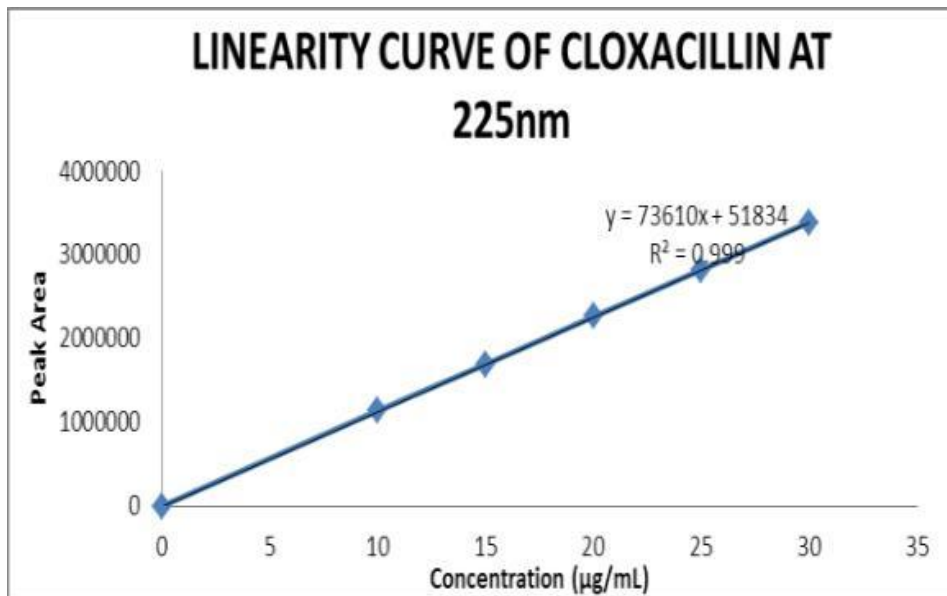
Six point calibration graphs was constructed in the concentration range of 0.1814-0.2236 µg/ml for ampicillin and 0.1718-0.2584 µg/ml for cloxacillin by diluting aliquots of 0.25-1.50 ml of standard stock solutions into 10ml volumetric flasks separately with the diluent. 10 µl of the standard solutions were injected into the HPLC system and analysed. Linear relationship between the peak area response and the corresponding concentration was observed as shown in Fig. 4 and Fig.5. The correlation coefficient, standard deviation of the slope and intercept were calculated as shown in Table 3.

**Table 3: Linearity.**

Concentration (%)	Area response			Degree of linearity		
	AMP	CLOX		R <sup>2</sup>	v-intercept	Slope
80%	1419636	4093095				
90%	1570234	4588723	AMP	0.999	181169.40	1549785
100%	1746849	5090499	CLOX	0.999	73160.00	51834.80
110%	1876815	5595025				
120%	2041238	6181648				



Linearity graph of ampicillin



Linearity graph of cloxacillin

### Accuracy

Accuracy of the method was determined by recovery studies. The solutions were analysed in triplicate each level by spiking the sample with 50%, 100% and 150% as per the proposed method. The %recovery and % RSD were calculated and results are shown in Table 4. Satisfactory recoveries were obtained by the proposed method which indicates the proposed method is said to be accurate.

**Table 4: Accuracy for ampicillin and cloxacillin.**

concentration	Added amount (mg)Amp	(mg) Clox	Removed Amp	Amount(mg)clox	%of Amp	Recovery Clox
80%	0.3626	0.3626	0.3867	0.3881	106.64	107.02
100%	0.45328	0.45328	0.4758	0.4827	104.98	106.48
120%	0.5439	0.5439	0.5560	0.5980	102.22	109.94

**Robustness**

The robustness study was performed by changing variation in flow rate and temperature. The drug was analysed under these experimental conditions and observed that there is no significant change in tailing factor and theoretical plates as shown in Table 5.

**Tale 5: Robustness.**

S.NO	Condition	%RSD of Ampicillin	% RSD of Cloxacillin
1	Flow rate(less)1.0ml/min	0	0.1
2	Flow rate(actual)1.2ml/min	0.2	0.1
3	Flow rate(more)1.4ml/min	0.6	0.6
4	Temperature(less)20 <sup>0</sup> C	0.2	0.1
5	Temperature(actual)25 <sup>0</sup> C	0.8	0.8
6	Temperature (more)30 <sup>0</sup> C	0.3	0.3

**Limit of detection and limit of quantification**

Limit of detection and limit of quantification was determined by signal to noise ratio method using dilute solution of standard and results were shown in Table 6.

**Table 6: Limit of detection and limit of quantification.**

Parameter	Ampicillin( $\mu\text{g/ml}$ )	Cloxacillin( $\mu\text{g/ml}$ )
LOD	0.017	0.06
LOQ	0.05	0.18

**CONCLUSION**

The new stability indicating RP-HPLC method was developed and validated as per guide lines for the simultaneous determination of ampicillin and cloxacillin in combined pharmaceutical dosage form. The proposed method was found to be accurate, precise, simple, economic, rapid and having good specificity. The developed method can be applied for the assay of commercial tablets containing ampicillin and cloxacillin in routine quality control samples.



**REFERENCES**

1. <http://www.drugbank.ca/drugs/DB00331>.
2. <http://www.drugbank.ca/drugs/DB0903832>.
3. Liuyang, Development and validation of derivative spectroscopic method for the simultaneous estimation of ampicillin tablet “International journal of pharma research & review”, July 2013; 2(7) 1: 6.
4. Audumbar Digambar Mali, “Development and validation of Rp- Hplc method for simultaneous estimation of ampicillin trihydrate in bulk pharmaceutical dosage forms”, International journal for research in pharmacy and chemistry”, IJRPC, 2013; 3(2): 208-212.
5. Yayratuani, Kissy, Sackey, and Akanji “Development and validation of RP-HPLC method for simultaneous determination of Ampicillin and Cloxacillin in oral suspension dosage forms”, International J. Pharma biosciences ijpbs, Apr-Jun 2011; 2(2): 134-140.
6. Hapse, “Development and validation of Reversed phase HPLC method for Simultaneous Estimation of Ampicillin and Cloxacillin in Tablet Dosage Forms “International journal of pharma tech research, July-Sept 2010; 2(3).
7. Method validation guidelines, International conference of harmonization; Geneva, 1996.